

Get Started... 1-2-3 A Brand-New Smile!



Assessment

Your doctor takes the intra oral scan or impression of your teeth. Get the personalized 3D treatment plan and see your smile journey.



Fabrication

Your doctor discusses this personalized plan with you and once it's approved, your aligners are fabricated and delivered within 7-10 days.



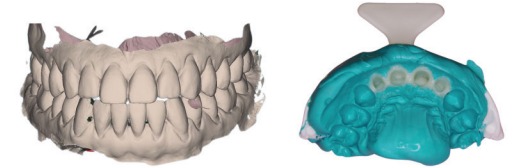
Treatment

Your smile transformation begins, visit your doctor for periodic check-ups, follow the plan and remember to wear your aligners 22x7.

CLINICAL REQUIREMENTS FOR VIRTUAL PLANNING

1-A Digital Scan of Upper and Lower Arches or

1-B Upper and Lower VPS Impressions Heavy Body with Light Body Wash



2: Bite Registration (Preferred or Upon Request)

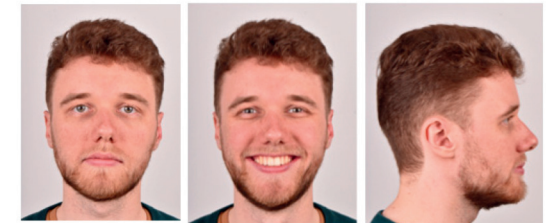
3. Intra-oral Photographs

- Front Occlusion View
- Right Occlusion View
- Left Occlusion View
- Upper Occlusion View
- Lower Occlusion View

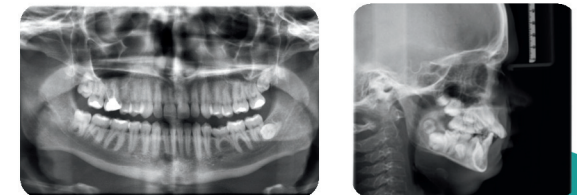


4. Extra-oral photographs

- Front Face Not Smiling
- Front Face Smiling
- Profile Not Smiling



5. Radiographs - OPG File (Full Mouth Left to Right)



NOTE: Doctors can consent to proceed with the case per the original impression